

da Vinci
SACROCOLPOPEXY



Solutions for minimally invasive gynecologic surgery

The *da Vinci*[®] Surgical System

- High-definition 3D vision
- *EndoWrist*[®] instrumentation
- *Intuitive*[®] motion

da Vinci[®] SACROCOLPOPEXY

Enables a reproducible, minimally invasive approach to sacrocolpopexy with unsurpassed surgical precision, ease and efficiency.

The visualization, depth perception, dexterity and control provided by the *da Vinci* System offer potential for:

- ❖ Improved access to the pelvis compared to open and conventional laparoscopic approaches
- ❖ Easier, more precise rectovaginal and presacral dissections
- ❖ Improved handling of suture and mesh for more accurate graft placement and attachment
- ❖ Easier, quicker and more precise suturing
- ❖ Complete control of the camera and all three operative arms for the ultimate in surgical autonomy, precision and efficiency
- ❖ A reproducible approach that restores open surgical principles to laparoscopic surgery



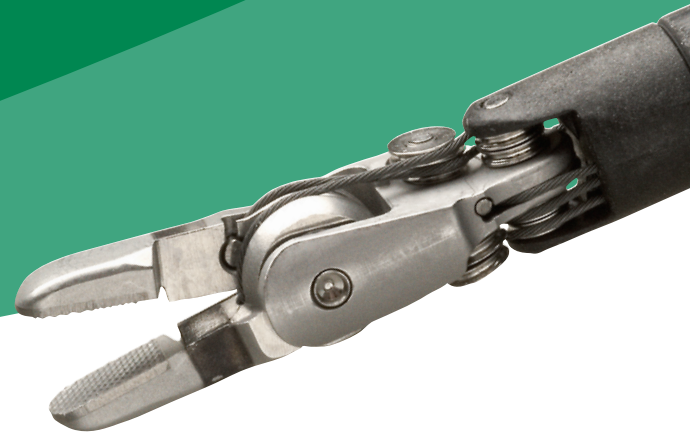
POTENTIAL PATIENT BENEFITS INCLUDE:

- ❖ Significantly less pain¹
- ❖ Less blood loss²
- ❖ Fewer transfusions²
- ❖ Less risk of wound infection
- ❖ Less scarring¹
- ❖ Shorter hospital stay¹
- ❖ Shorter recovery time³



¹Elliott DS, Krambeck AE, Chow GK. Long-term results of robot-assisted laparoscopic sacrocolpopexy for the treatment of high grade vaginal vault prolapse. *J Urol.* 2006 Aug;176(2):655-9. Abstract. ²Geller EJ, Siddiqui NY, Wu JM, Visco AG. Short-Term Outcomes of Robotic Sacrocolpopexy Compared With Abdominal Sacrocolpopexy. *Obstetrics & Gynecology.* 2008;112:1201-6. ³Piquion-Joseph, JM, Nayar A, Ghazaryan A, Robot-assisted gynecological surgery in a community setting *Journal of Robotic Surgery,* 2009 pp. 1-4

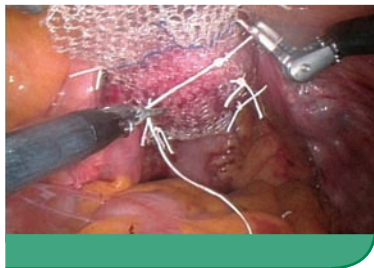
Procedure Highlights



Vaginal Apex Dissection Improved visualization allows for optimal exposure of the vaginal apex for later mesh attachment. The surgical dexterity afforded by the Fenestrated Maryland Bipolar Forceps and *Hot Shears*[™] (Monopolar Curved Scissors) enable precise, controlled dissections to fully and safely develop the anterior bladder flap and posterior rectovaginal septum.



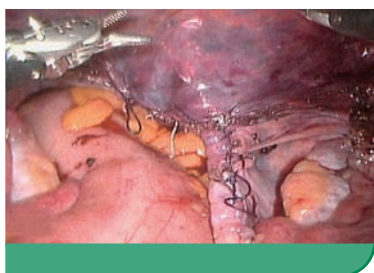
Presacral Space Dissection and Exposure of Anterior Longitudinal Ligament The sacral promontory, pelvic vasculature and ureters can be clearly seen using a 30° down scope and the 3rd instrument arm for sigmoid retraction. The Fenestrated Maryland Bipolar Forceps and *Hot Shears* are used to delicately incise the peritoneum towards the cul-de-sac and to expose the anterior longitudinal ligament while controlling hemostasis.



Vaginal Apex Mesh Attachment Using a *SutureCut*[™] Needle Driver, four to eight CV-2 Gore-Tex[®] sutures easily attach the mesh to the vaginal wall, while penetration into the vaginal epithelium is avoided with the aid of superior 3D visualization. The *SutureCut* Needle Driver provides fluid, self-assisted suturing, facilitating balanced suture placement and helping to distribute force evenly over the mesh. It also provides integrated cutting following knot tying for improved operative efficiency. The 3rd instrument arm can be used to hold the sacral end of the mesh for improved mesh placement and visualization.



Anterior Longitudinal Ligament Mesh Attachment The superior dexterity of the *EndoWrist* Needle Drivers enables precise suturing within tight spaces, controlled navigation around the middle sacral vessels and accurate, efficient slip-knot tying. The *SutureCut* Needle Driver's high-force grip facilitates suturing of the mesh to the anterior longitudinal ligament, while the 3rd instrument arm provides sigmoid retraction.



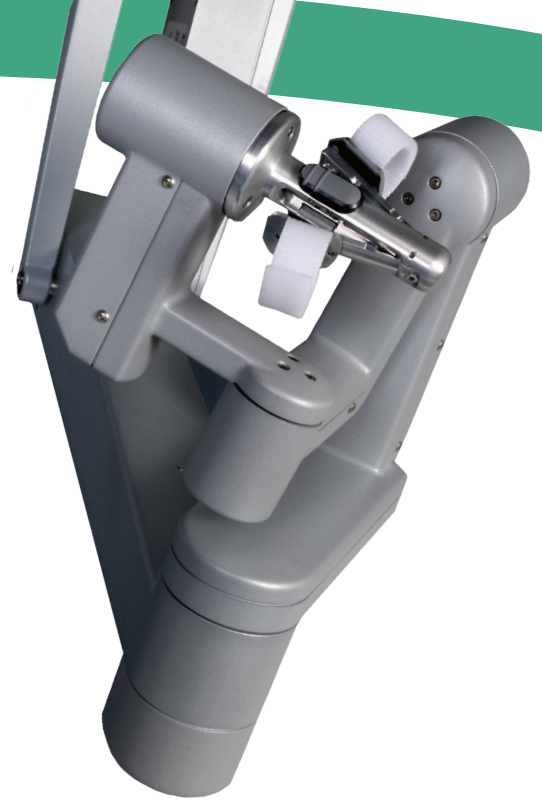
Peritoneal Closure The mesh can be easily retroperitonealized using the *EndoWrist* instrumentation. The *SutureCut* and Large Needle Drivers facilitate a continuous locking suture to close the previously incised peritoneum, while the 3rd instrument arm retracts the bowel.

da Vinci.
SACROCOLPOPEXY

Interactive Procedure Overview



INTUITIVE
SURGICAL®








da Vinci.
SACROCOLPOPEXY

Technique Video





DVD
ROM™

INTUITIVE
SURGICAL®

EndoWrist® Instruments Optimized for da Vinci Sacrocolpopexy

STANDARD/S PNs	TARGETED APPLICATION	FEATURE	POTENTIAL BENEFITS
 <p>Hot Shears™ (Monopolar Curved Scissors): 400179/420179 Requires Tip Cover: 400180</p>	<ul style="list-style-type: none"> ❖ Accurate dissection of pubocervical fascia and rectovaginal space ❖ Dissecting presacral space ❖ Maintaining hemostasis during dissection 	<ul style="list-style-type: none"> ❖ Combined scissors and monopolar cautery ❖ Tapered tip-profile 	<ul style="list-style-type: none"> ❖ Improves procedure efficiency ❖ Fewer instrument exchanges ❖ Precise, clean tissue cutting ❖ Precise, localized hemostasis ❖ Blunt tissue dissection
 <p>Fenestrated Maryland Bipolar Forceps: 400172/420172</p>	<ul style="list-style-type: none"> ❖ Grasping, dissecting and coagulating ❖ Delineating vaginal apex ❖ Dissecting presacral space 	<ul style="list-style-type: none"> ❖ Fenestration at the base of the jaw ❖ Curved, tapered jaw design ❖ Bipolar energy device 	<ul style="list-style-type: none"> ❖ Improves tissue grasping by allowing larger overall tissue purchase ❖ Excellent access to tissue planes for optimal dissection capability ❖ Maintains hemostasis during dissection
 <p>SutureCut™ Needle Driver: 400209/420209</p>	<ul style="list-style-type: none"> ❖ Uninterrupted suturing of mesh to vagina and sacral ligament ❖ Retroperitonealizing of mesh ❖ Surgeon console control of mesh tension adjustment and trimming 	<ul style="list-style-type: none"> ❖ Strong grasping force ❖ Scissor blades at the base ❖ Tapered, smooth outer jaw 	<ul style="list-style-type: none"> ❖ Secure grasping of larger needles (e.g., CT-1, CT-2) ❖ Suturing and cutting capability in one instrument improves operative efficiency ❖ Facilitates suture sliding during knot-tying
 <p>Large Needle Driver: 400006/420006</p>	<ul style="list-style-type: none"> ❖ Mesh suturing to vagina and anterior longitudinal ligament ❖ Retroperitonealizing of mesh 	<ul style="list-style-type: none"> ❖ Carbide-insert style jaws ❖ Diamond pattern jaw profile 	<ul style="list-style-type: none"> ❖ Provides firm grip and secure needle control
 <p>Fenestrated Bipolar Forceps: 400205/420205</p>	<ul style="list-style-type: none"> ❖ Grasping, dissecting and coagulating ❖ Retracting sigmoid colon (3rd instrument arm) ❖ Internal vaginal manipulation (3rd instrument arm) ❖ Holding sacral mesh portion during vaginal mesh attachment 	<ul style="list-style-type: none"> ❖ Fenestrated wide jaw profile ❖ Bipolar energy device 	<ul style="list-style-type: none"> ❖ Allows for secure grasping and tissue-handling ❖ Localizes coagulation with minimal thermal spread

Additional EndoWrist Instrument Options

 <p>EndoWrist PK™ Dissector: 400214/420214 (old) 400227/420227 (new)</p>	<ul style="list-style-type: none"> ❖ Grasping, dissecting and coagulating ❖ Delineating apex of pubocervical fascia and rectovaginal space ❖ Dissecting presacral space ❖ Maintaining hemostasis during dissection 	 <p>Double Fenestrated Grasper: 400189/420189</p>	<ul style="list-style-type: none"> ❖ Firm, yet atraumatic grasping of bowel and other delicate structures ❖ Holding sacral mesh portion during vaginal mesh attachment
 <p>Mega™ Needle Driver: 400194/420194</p>	<ul style="list-style-type: none"> ❖ Secure grasping of CT-1 & CT-2 needles for mesh attachment 	 <p>Cadiere Forceps: 400049/420049</p>	<ul style="list-style-type: none"> ❖ Grasping and dissecting ❖ Provides atraumatic retraction



INTUITIVE SURGICAL®

Taking Surgery Beyond the Limits of the Human Hand.™

Worldwide Headquarters

1266 Kifer Road, Building 101
Sunnyvale, CA 94086-5304

Tel: +1.408.523.2100

Fax: +1.408.523.1390

European Office

Intuitive Surgical Sàrl
1, chemin des Mûriers
1170 Aubonne,
Suisse

Tel: +41.21.821.20.00

Fax: +41.21.821.20.01

Asia Pacific Office

Intuitive Surgical Sàrl Shanghai
Room 1601A, 16/F, Feidiao International Building
1065 Zhao Jiabang Road, Shanghai 200030, P.R. China

Tel: +8621.5158.1633

Fax: +8621.5158.1634

www.IntuitiveSurgical.com

www.daVinciSurgery.com

To contact a representative or receive additional information,
please call Intuitive Surgical Customer Service at 1-888-409-4774.

While clinical studies support the use of the *da Vinci* Surgical System as an effective tool for minimally invasive surgery, individual results may vary. Before performing any clinical procedure utilizing the System, physicians are responsible for receiving sufficient training and proctoring to ensure that they have the requisite training, skill, and experience necessary to protect the health and safety of the patient. For technical information, including full cautions and warnings on using the *da Vinci* System, please refer to the System User Manual. Read all instructions carefully. Failure to properly follow instructions, notes, cautions, warnings, and danger messages associated with this equipment may lead to serious injury or complications for the patient. © 2009 Intuitive Surgical. All rights reserved. *Intuitive*, *Intuitive Surgical*, *da Vinci*, *da Vinci S*, *da Vinci Si*, *InSite*, *TilePro* and *EndoWrist* are trademarks or registered trademarks of Intuitive Surgical. All other product names are trademarks or registered trademarks of their respective holders. PN 871690 Rev B 10/09